

# 2018 KS2 School Dashboard for governors & school leaders

Produce custom dashboards at  
[www.fftaspire.org](http://www.fftaspire.org)

## Saint Francis Catholic Primary School

LA Leicestershire DFE 8553342 Produced September 2018 Version 1

### What it is

Seven easy-to-use reports which help governors and school leaders to evaluate school performance using the latest 2017 DfE school performance indicators.

### What it tells you

- What are the strengths and areas for improvement in your school?
- How does attainment and pupil progress compare to the national average?
- How are you performing in different subjects?
- Do you have any under-performing groups of pupils?
- How might the context of your school affect performance?
- How does pupil attendance compare to the national average?

### About the data shown

1 2 3

#### Actual results

Actual results for your school, using a range of measures such as averages and thresholds.



#### Gauges

These display headline indicators and whether actual results and pupils' progress are in line with, or significantly above or below, the national average.

ESTIMATED



1 2 3

#### Pupil progress

The value added progress that your pupils have made from one key stage to the next. FFT compares your actual results to the estimated results based on the progress of similar pupils nationally.



#### Statistical significance

Green plus signs and red minus signs highlight where either actual results or pupils' progress is significantly above or below the national average.



#### Trends

The dashboard analyses school performance over 3-5 years. Any significant year-on-year improvement is highlighted using an up arrow. Significant declines in performance are highlighted with a down arrow.



#### Strengths & weaknesses

These highlight key pupil groups and subjects where progress is above or below the national average.

### Working in partnership with



### Data sources

Generated from FFT Aspire which includes data sourced from the DfE (National Pupil Database) and data calculated by FFT. FFT is accredited as a DfE supplier to receive early access to ASP data. Headline performance indicators will be consistent with the DfE School Performance Tables and ASP.

# Overview

## KS2 Attainment 2018 · Actual results

33 pupils

## KS2 Progress 2018 · Value Added

32 matched pupils

Average Scaled Score (Re, Ma)

% Expected standard+ (Re, Wr, Ma)

Average Scaled Score (Re, Ma)

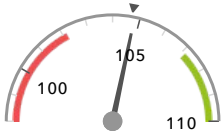
% Expected standard+ (Re, Wr, Ma)

104.8

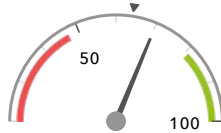
70%

+3.0 + ↑

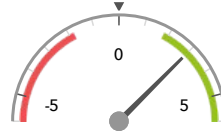
+20% +



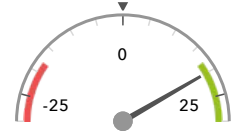
In line with the national average (104.7) ◀



In line with the national average (64%) ◀



Significantly above the national average (0) ◀



Significantly above the national average (0%) ◀

## KS2 higher and lower performing pupil groups 2018

	Higher performing	Lower performing
Overall achievement pupil progress	Middle attainers (7) <span style="color: green;">+</span> <span style="color: green;">↑</span> SEN Support (9) <span style="color: green;">+</span> Summer Term (14) <span style="color: green;">+</span>	
KS2 reading achievement pupil progress	Middle attainers (7) <span style="color: green;">↑</span> Female (14) <span style="color: green;">+</span> <span style="color: green;">↑</span> Summer Term (14)	
KS2 writing achievement pupil progress	Female (14) <span style="color: green;">+</span> <span style="color: green;">↑</span> Middle attainers (7) <span style="color: green;">+</span> <span style="color: green;">↑</span> Summer Term (14) <span style="color: green;">+</span> <span style="color: green;">↑</span>	
KS2 mathematics achievement pupil progress	SEN Support (9) <span style="color: green;">+</span> First language not English (9) <span style="color: green;">+</span> Male (18) <span style="color: green;">+</span>	
KS2 grammar, punctuation & spelling achievement pupil progress	Middle attainers (7) <span style="color: green;">+</span> <span style="color: green;">↑</span> Female (14) <span style="color: green;">+</span> No SEN (23) <span style="color: green;">+</span> <span style="color: green;">↑</span>	

# Attainment & progress

## KS2 Attainment 2018

33 pupils

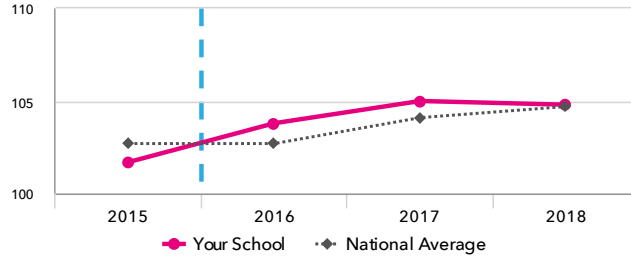
Average Scaled Score (Re, Ma)

104.8

FFT Rank



In line with the national average (104.7)



## KS2 Progress 2018

32 matched pupils

Average Scaled Score (Re, Ma)

+3.0 + ↑

FFT Rank



Significantly above the national average (0)

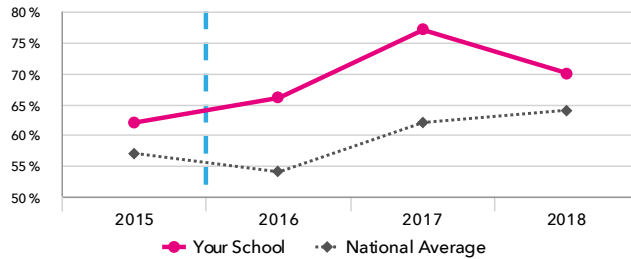
% Expected standard+ (Re, Wr, Ma)

70%

FFT Rank



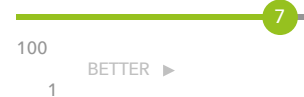
In line with the national average (64%)



% Expected standard+ (Re, Wr, Ma)

+20% +

FFT Rank



Significantly above the national average (0%)

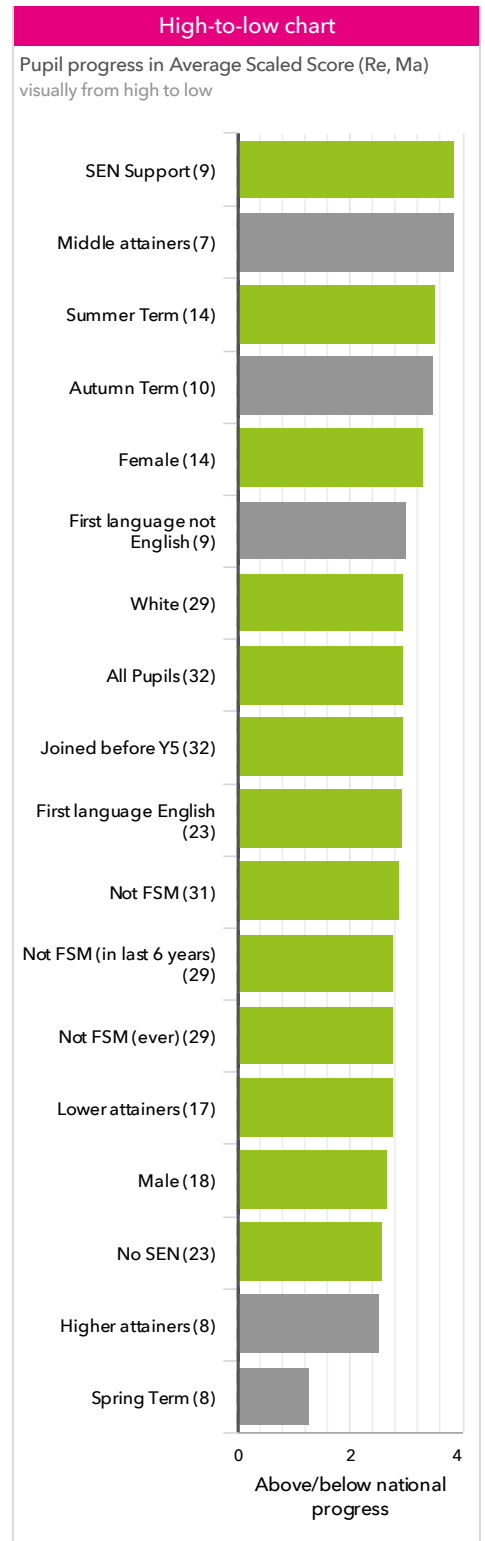
## KS2 performance summary

	Actual results			Pupil progress		
	2016	2017	2018	2016	2017	2018
Number of Pupils / % Matched	29	26	33	100%	100%	97%
% Expected standard+ (Re, Wr, Ma)	66%	77%	70%	+1%	+4%	+20% +
% Higher standard (Re, Wr, Ma)	10%	4%	15%	+3%	-4%	+12% +
Average Scaled Score (Re, GPS, Ma)	104.3	106.4	105.5	-0.1 ↑	+0.8	+3.6 + ↑
Average Scaled Score (Re, Ma)	103.8	105.0	104.8	-0.3	-0.2	+3.0 + ↑
% Expected standard+ Reading	76%	88%	73%	+1%	+5%	+9%
% Higher standard Reading	21%	15%	24%	-5%	-13%	+6%
Scaled Score Reading	103.9	104.0	104.3	-0.1	-1.3	+2.2 + ↑
% Expected standard+ Writing	86%	85%	79%	+2%	-2%	+12%
% Higher standard Writing	14%	15%	33%	-8%	-4%	+23% +
Scaled Score Writing	102.7	102.7	103.8	+0.2	-0.3	+4.6 + ↑
% Expected standard+ Maths	79%	96% +	91% +	+3%	+13%	+24% +
% Higher standard Maths	17%	19%	21%	-3%	-7%	+7%
Scaled Score Maths	103.8	106.1	105.3	-0.5	+0.9	+3.7 + ↑
% Expected standard+ Grammar, Punctuation & Spelling	83%	92%	79%	+1%	+5%	+13%
% Higher standard Grammar, Punctuation & Spelling	24%	58% + ↑	36%	-8%	+21% + ↑	+14%
Scaled Score Grammar, Punctuation & Spelling	105.9	109.5 + ↑	107.0	+0.5 ↑	+2.4 +	+4.4 +
% Expected standard+ Science	90%	100% +	85%	-	-	-
Average Point Score (Re, Wr, Ma)	-	-	-	-	-	-
% Level 4+ (Re, Wr, Ma)	-	-	-	-	-	-
% Level 4B+ (Re, Wr, Ma)	-	-	-	-	-	-
% Level 5+ (Re, Wr, Ma)	-	-	-	-	-	-

# Pupil groups

## KS2 Pupil groups performance 2018

		Pupils	Actual results			Pupil progress		
			Average Scaled Score (Re, Ma)	% Expected standard + (Re, Wr, Ma)	% Higher standard (Re, Wr, Ma)	Average Scaled Score (Re, Ma)	% Expected standard + (Re, Wr, Ma)	% Higher standard (Re, Wr, Ma)
Summary	<a href="#">All Pupils &gt;</a>	33	104.8	70%	15%	+3.0 <span>⬆️</span> <span>⬆️</span>	+20% <span>⬆️</span>	+12% <span>⬆️</span>
Gender	<a href="#">Male &gt;</a>	19	102.5	53%	0%	+2.7 <span>⬆️</span>	+15%	-2%
	<a href="#">Female &gt;</a>	14	107.9	93%	36% <span>⬆️</span>	+3.3 <span>⬆️</span> <span>⬆️</span>	+26%	+29% <span>⬆️</span>
Prior Attainment	<a href="#">Higher attainers &gt;</a>	8	111.3	100%	50%	+2.5 <span>⬆️</span>	+8%	+36% <span>⬆️</span>
	<a href="#">Middle attainers &gt;</a>	7	108.4	100%	14%	+3.9 <span>⬆️</span>	+29%	+12%
	<a href="#">Lower attainers &gt;</a>	17	100.5	47% <span>⬆️</span>	0%	+2.8 <span>⬆️</span>	+22%	-0%
Pupil Premium	<a href="#">FSM (in last 6 years) &gt;</a>	3	100.8	33%	0%	+4.6	+12%	-0%
	<a href="#">Not FSM (in last 6 years) &gt;</a>	30	105.2	73%	17%	+2.8 <span>⬆️</span> <span>⬆️</span>	+21% <span>⬆️</span>	+13% <span>⬆️</span>
FSM	<a href="#">FSM &gt;</a>	1	106.0	100%	0%	+5.5	+62%	-0%
	<a href="#">Not FSM &gt;</a>	32	104.8	69%	16%	+2.9 <span>⬆️</span> <span>⬆️</span>	+19% <span>⬆️</span>	+12% <span>⬆️</span>
FSM Ever	<a href="#">FSM (ever) &gt;</a>	3	100.8	33%	0%	+4.6	+12%	-0%
	<a href="#">Not FSM (ever) &gt;</a>	30	105.2	73%	17%	+2.8 <span>⬆️</span> <span>⬆️</span>	+21% <span>⬆️</span>	+13% <span>⬆️</span>
Term of Birth	<a href="#">Autumn Term &gt;</a>	10	106.2	90%	10%	+3.5	+39% <span>⬆️</span>	+6%
	<a href="#">Spring Term &gt;</a>	8	104.7	63%	13%	+1.3 <span>⬆️</span>	+4%	+8%
	<a href="#">Summer Term &gt;</a>	15	103.9	60%	20%	+3.5 <span>⬆️</span>	+16%	+17% <span>⬆️</span>
SEN Group	<a href="#">SEN Support &gt;</a>	9	99.6	33%	0%	+3.9 <span>⬆️</span>	+16%	-0%
	<a href="#">EHC Plan &gt;</a>	1	100.0	0%	0%	-	-	-
	<a href="#">No SEN &gt;</a>	23	107.0	87%	22%	+2.6 <span>⬆️</span> <span>⬆️</span>	+22% <span>⬆️</span>	+16% <span>⬆️</span>
EAL	<a href="#">First language not English &gt;</a>	10	105.6	70%	20%	+3.0	+18%	+17% <span>⬆️</span>
	<a href="#">First language English &gt;</a>	23	104.5	70%	13%	+2.9 <span>⬆️</span> <span>⬆️</span>	+21%	+9% <span>⬆️</span>
Mobility	<a href="#">Joined before Y5 &gt;</a>	33	104.8	70%	15%	+3.0 <span>⬆️</span> <span>⬆️</span>	+20% <span>⬆️</span>	+12% <span>⬆️</span>
Ethnicity	<a href="#">White &gt;</a>	30	104.7	70%	13%	+3.0 <span>⬆️</span> <span>⬆️</span>	+21% <span>⬆️</span>	+9% <span>⬆️</span>
	<a href="#">Black Caribbean &gt;</a>	2	102.0	50%	0%	+0.9	+7%	-0%
	<a href="#">Indian &gt;</a>	1	112.5	100%	100%	+6.7	+17%	+96%



# Subjects

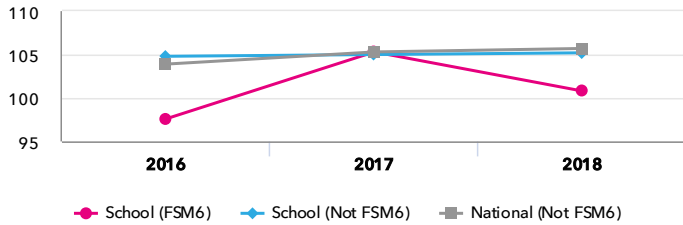
## KS2 subject performance 2018

	Actual results			Pupil progress			Actual results over time	
	2016	2017	2018	2016	2017	2018		
Number of Pupils / % Matched	29	26	33	100%	100%	97%		
<b>Reading</b>								
% Expected standard+	76%	88%	73%	+1%	+5%	+9%		
% Higher standard	21%	15%	24%	-5%	-13%	+6%		
Scaled Score	104	104	104	-0.1	-1.3	+2.2 ↑		
Level 4+	-	-	-	-	-	-		
Level 4B+	-	-	-	-	-	-		
Level 5+	-	-	-	-	-	-		
Average Point Score	-	-	-	-	-	-		
<b>Writing</b>								
% Expected standard+	86%	85%	79%	+2%	-2%	+12%		
% Higher standard	14%	15%	33%	-8%	-4%	+23% ↑		
Scaled Score	103	103	104	+0.2	-0.3	+4.6 ↑		
Level 4+	-	-	-	-	-	-		
Level 5+	-	-	-	-	-	-		
Average Point Score	-	-	-	-	-	-		
<b>Maths</b>								
% Expected standard+	79%	96% ↑	91% ↑	+3%	+13%	+24% ↑		
% Higher standard	17%	19%	21%	-3%	-7%	+7%		
Scaled Score	104	106	105	-0.5	+0.9	+3.7 ↑		
Level 4+	-	-	-	-	-	-		
Level 4B+	-	-	-	-	-	-		
Level 5+	-	-	-	-	-	-		
Average Point Score	-	-	-	-	-	-		
<b>Grammar, Punctuation &amp; Spelling</b>								
% Expected standard+	83%	92%	79%	+1%	+5%	+13%		
% Higher standard	24%	58% ↑	36%	-8%	+21% ↑	+14%		
Scaled Score	106	110 ↑	107	+0.5 ↑	+2.4 ↑	+4.4 ↑		
<b>Science</b>								
% Expected standard+	90%	100% ↑	85%	-	-	-		
Level 4+	-	-	-	-	-	-		
Level 5+	-	-	-	-	-	-		
Average Point Score	-	-	-	-	-	-		

# Disadvantaged pupils

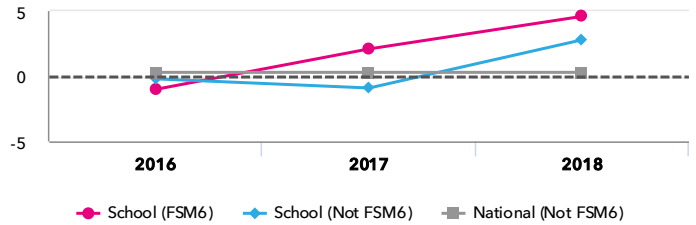
## KS2 attainment for disadvantaged pupils 2018

Average Scaled Score (Re, Ma)



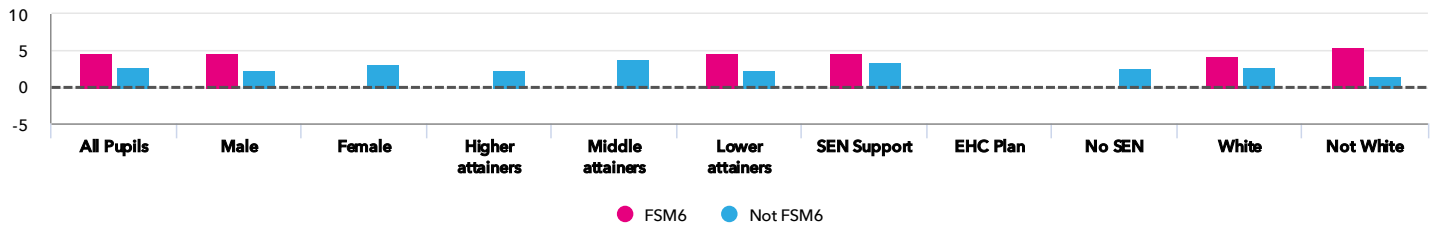
## KS2 progress for disadvantaged pupils 2018

Average Scaled Score (Re, Ma)



## Progress gap

Average Scaled Score (Re, Ma)

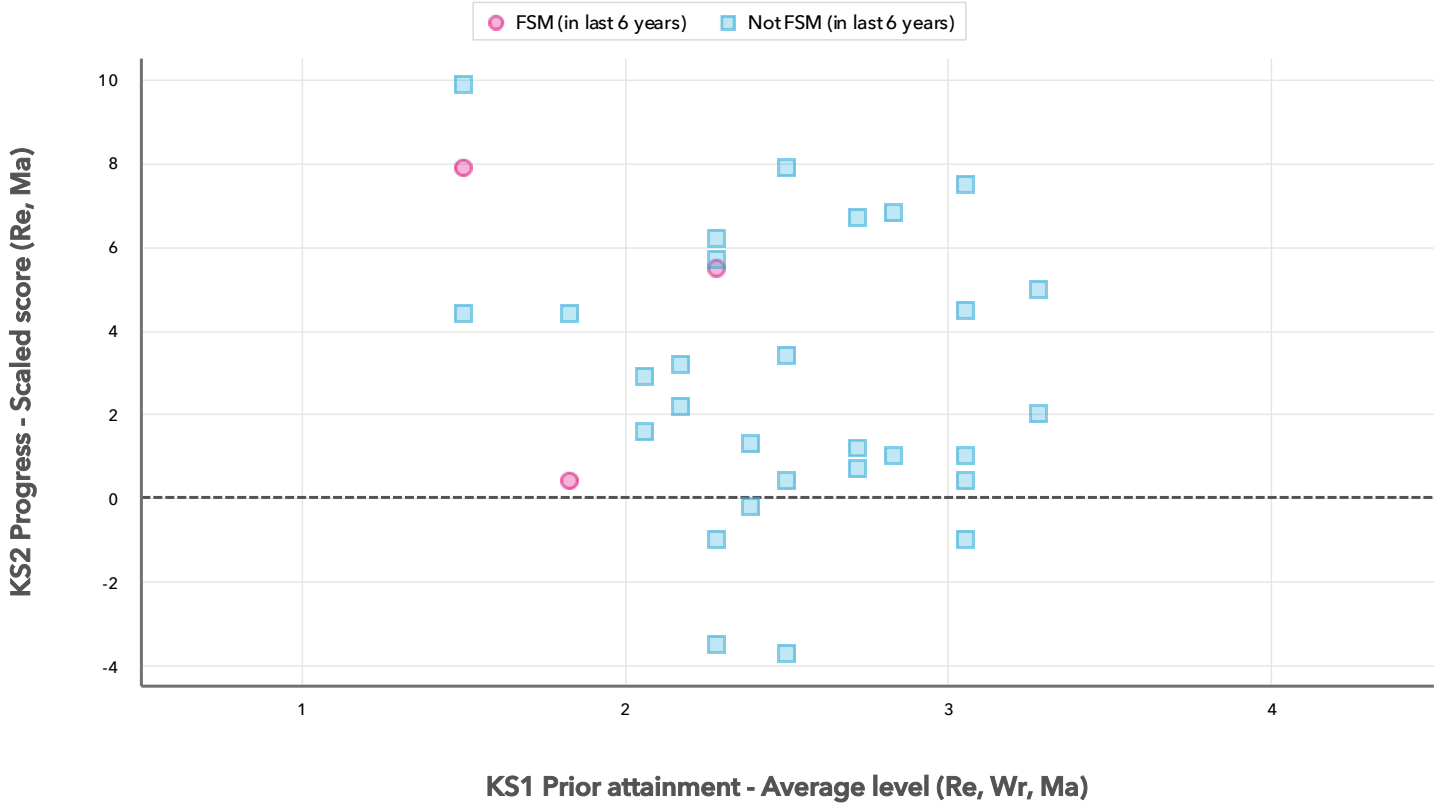


## Attainment & progress

Pupils		Attainment			Progress				
		FSM6	Not FSM6	Gap	FSM6	Not FSM6	Gap		
Summary	All Pupils	3	30	100.8	105.2	-4.4	4.6	2.8 <span style="color: green;">↑</span>	1.8
Gender	Male	3	16	100.8	102.8	-2	4.6	2.3	2.3
	Female	-	14	-	107.9	-	-	3.3	-
Prior Attainment	Higher attainers	-	8	-	111.3	-	-	2.5	-
	Middle attainers	-	7	-	108.4	-	-	3.9	-
	Lower attainers	3	14	100.8	100.4	0.4	4.6	2.4	2.2
SEN Group	SEN Support	3	6	100.8	99	1.8	4.6	3.5	1.1
	EHC Plan	-	1	-	100	-	-	-	-
	No SEN	-	23	-	107	-	-	2.6	-
Ethnic Group	White	2	28	98.3	105.2	-6.9	4.2	2.9	1.3
	Not White	1	2	106	105.3	0.7	5.5	1.5	4

# Scatterplot

KS2 Pupil scatterplot 2018 33 pupils highlighted by Pupil Premium



## Context

## Context · Year 6 · 2017 / 2018

		Pupils	Proportion	
			School	National
<b>Summary</b>	All Pupils	33	100%	100%
<b>Gender</b>	Male	19	58%	51%
	Female	14	42%	49%
<b>Prior Attainment</b>	Higher attainers	8	24%	31%
	Middle attainers	7	21%	35%
	Lower attainers	17	52%	29%
<b>Pupil Premium</b>	FSM (in last 6 years)	3	9%	30%
	Not FSM (in last 6 years)	30	91%	69%
<b>FSM</b>	FSM	1	3%	15%
	Not FSM	32	97%	85%
<b>FSM Ever</b>	FSM (ever)	3	9%	31%
	Not FSM (ever)	30	91%	69%
<b>Term of Birth</b>	Autumn Term	10	30%	33%
	Spring Term	8	24%	32%
	Summer Term	15	45%	35%
<b>SEN Group</b>	SEN Support	9	27%	15%
	EHC Plan	1	3%	3%
	No SEN	23	70%	82%
<b>EAL</b>	First language not English	10	30%	20%
	First language English	23	70%	80%
<b>Mobility</b>	Joined before Y5	33	100%	93%
<b>Ethnicity</b>	White	30	91%	74%
	Black Caribbean	2	6%	3%
	Indian	1	3%	3%

## Absence · Year 6 · 2017 / 2018

		Pupils	Absence		Persistent absentees	
			School	National	School	National
<b>Summary</b>	All Pupils	33	4%	4%	6%	5%
<b>Gender</b>	Male	19	4%	4%	5%	6%
	Female	14	3%	4%	7%	5%
<b>Prior Attainment</b>	Higher attainers	8	2%	3%	0%	2%
	Middle attainers	7	2%	4%	0%	4%
	Lower attainers	17	5%	5%	12%	10%
<b>Pupil Premium</b>	FSM (in last 6 years)	3	5%	5%	0%	12%
	Not FSM (in last 6 years)	30	4%	3%	7%	3%
<b>FSM</b>	FSM	1	9%	6%	0%	16%
	Not FSM	32	4%	4%	6%	4%
<b>FSM Ever</b>	FSM (ever)	3	5%	5%	0%	11%
	Not FSM (ever)	30	4%	3%	7%	3%
<b>Term of Birth</b>	Autumn Term	10	2%	4%	0%	6%
	Spring Term	8	4%	4%	0%	6%
	Summer Term	15	4%	4%	13%	5%
<b>SEN Group</b>	SEN Support	9	6%	5%	11%	10%
	EHC Plan	1	9%	7%	0%	20%
	No SEN	23	3%	4%	4%	4%
<b>EAL</b>	First language not English	10	3%	4%	0%	5%
	First language English	23	4%	4%	9%	6%
<b>Mobility</b>	Joined before Y5	33	4%	4%	6%	5%
<b>Ethnicity</b>	White	30	4%	4%	7%	6%
	Black Caribbean	2	6%	5%	0%	9%
	Indian	1	2%	3%	0%	3%